

ROAD SAFETY SYMPOSIUM

An exploration of evidence-based road safety innovation and sustainable mobility



Prof. Fred Wegman 
Professor - Traffic Safety
The Netherlands



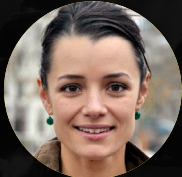
Assoc. Prof. Jeremy Woolley
Associate Professor, Director
Centre for Automotive Safety
Research, University of Adelaide



John Merritt
Chair of the Board
Road Safety Victoria



Prof. Brian Fildes
Adjunct Professor
Monash University
Accident Research Centre



Meredith Glaser 
Urban Planner
University of Amsterdam



Cr. Nicolas Frances Gilley MBE
Council Transport Chairman
City of Melbourne

Topics

- Understanding current trends and challenges in road safety
- What has and hasn't worked in road safety
- Is Australia meeting its road safety targets, and what can be learnt from the world leaders in transport safety?
- Emerging trends in road safety: e-scooters, bike share, distracted driving and more
- Autonomous vehicles, Mobility as a Service and implications for road safety and street design
- Boosting participation and safety outcomes for walking and cycling. What can Australia learn from best practice countries?
- 30km/h zones: what's their impact on safety, travel time and their applicability to Victoria?

Friday 13th March 2020
9:00am – 5:00pm
Yarra Room
Melbourne Town Hall

\$620 *inc. GST*
Standard price
Registrations close 3rd March 2020



**Flinders Street
Station**

Institute for
Sensible Transport
www.sensibletransport.org.au



ROAD SAFETY SYMPOSIUM

An exploration of evidence-based road safety innovation and sustainable mobility

Melbourne

| | | |
|---------------|---|---|
| 8.30 - 9.00 | • | Registration, tea and coffee |
| 9.00 - 9.30 | | Councillor's Opening Address and Q&A Councillor Nicolas Frances Gilley MBE, City of Melbourne |
| 9.30 - 10.15 | | Opening keynote: Sustainable Safety, the Dutch Approach and Emerging Challenges Professor Fred Wegman, Delft University |
| 10.15 - 10.30 | | Q&A: Professor Fred Wegman |
| 10.30 - 10.50 | • | Morning tea |
| 10.50 - 11.20 | | The transport challenges faced by Australian cities and the tough decisions facing governments seeking to achieve safer, more productive cities John Merritt |
| 11.20 - 11.35 | | Q&A: John Merritt |
| 11.35 - 12.05 | | Findings from the Commonwealth's Inquiry into National Road Safety Strategy and the implications for achieving Vision Zero Associate Professor Jeremy Woolley, University of Adelaide |
| 12.05 - 12.30 | | Q&A: Jeremy Woolley, John Merritt, and Professor Fred Wegman |
| 12.30 - 1.15 | • | Lunch |
| 1.15 - 1.55 | | Unconventional approaches to achieving better safety and liveability outcomes: The case of Amsterdam and implications for Melbourne Meredith Glaser, University of Amsterdam |
| 1.55 - 2.25 | | Lessons from Australia's first 30km/h trial zone: Impacts and implications for future slow speed zones Professor Brian Fildes, Monash University |
| 2.25 - 2.50 | | Q&A: Meredith Glaser & Professor Brian Fildes |
| 2.50 - 3.05 | • | Afternoon tea |
| 3.05 - 3.40 | | Achieving Vision Zero: Reflections on Australia Road Safety Culture and Innovation Needed to Achieve Vision Zero Professor Fred Wegman, Delft University |
| 3.40 - 3.55 | | Q&A: Professor Fred Wegman |
| 3.55 - 4.55 | | Panel discussion: Achieving a safer, more sustainable transport system |
| 5.00 | | Close |